

PARTS LIST

[MX-KA6]

* All printed circuit boards and its assemblies are not available as service parts.

Area suffix

B ----- U.K.
E ----- Continental Europe
EN ----- Northern Europe
EV ----- Eastern Europe

- Contents -

Exploded view of general assembly and parts list (Block No.M1)	3- 3
CD changer mechanism assembly and parts list (Block No.MA).....	3- 5
Cassette mechanism assembly and parts list (Block No.MP).....	3- 7
Electrical parts list (Block No.01~05).....	3- 8
Packing materials and accessories parts list (Block No.M3,M5).....	3-12

- Note-

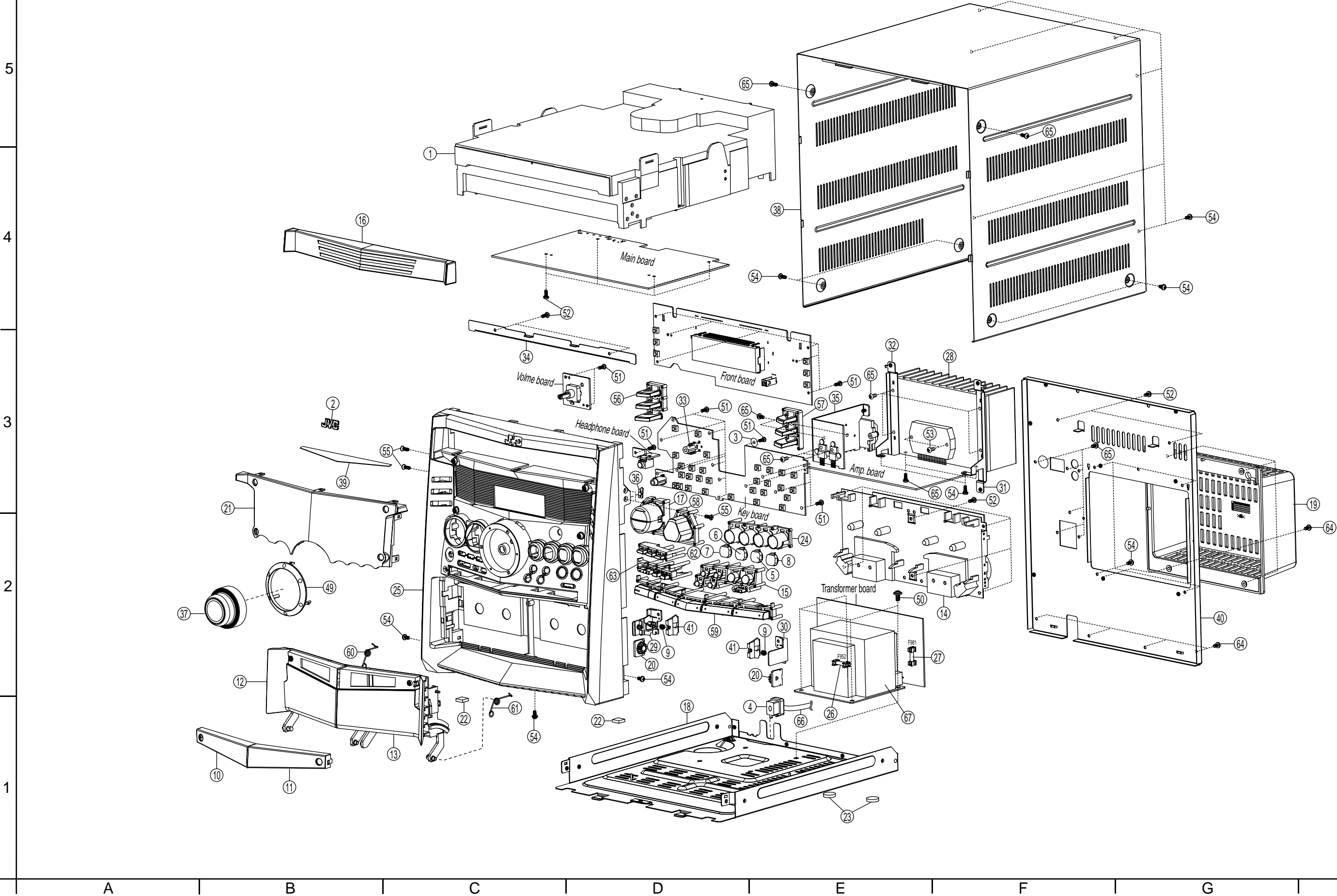
Parts number of normal capacitors and normal resistors doesn't listed on the parts list

< M E M O >

Exploded view of general assembly and parts list

Block No.

M	1	M	M
---	---	---	---



■ Parts list (General assembly)

Block No. M1MM

⚠	Item	Parts number	Parts name	Q'ty	Description	Area	
⚠	1	-----	CD CHANGER MACHA	1	5RF-5B		
	2	BI109835010201	BADGE JVC	1			
	3	BI300856010101	WASHER	1			
	4	BI301789010101	BUSHING	1			
	5	BI107475030101	CAP CD3	1			
	6	BI107475020101	CAP CD2	1			
	7	BI107475010101	CAP CD1	1			
	8	BI107475040101	CAP OPEN CLOSE	1			
	9	BI201789010102	CASS LOCK SPRING	2			
	10	BI107468010101	CASS DOOR WIN L	1			
	11	BI107467010101	CASS DOOR WIN R	1			
	12	BI107466010101	CASS HOLDER L	1			
	13	BI107465010101	CASS HOLDER R	1			
	14	-----	CASSETTE MECHA	1			
⚠ ⚠	15	BI107477010101	CD EJECT BUTTON	1	CMAT6Z219A	B,E,EN EV	
	16	BI107463010101	CD FITTING	1			
	17	BI107471010101	CD SEL BUTTON A	1			
	18	BI202547010101	CHAS MAIN	1			
	19	BI107483010101	HEAT SINK COVER	1			
	20	BI301388010101	DAMPING GEAR	2			
	21	BI107464040101	DISPLAY WINDOW	1			
	22	BI103362020102	EVA FOOT	2			
	23	BI301779010101	EVA FOOT C	2			
	24	BI107473010101	FRAME CD SELECT	1			
	25	BI107462020401	FRONT PANEL	1			
	26	BI402891	FUSE	1			F952/1.6A 250V
	27	BI403081	FUSE	1			F981/1.25A 250V
	28	BI202556010101	HEAT SINK	1			
	29	BI104143010102	HOLDER LOCK L	1			
	30	BI104143010202	HOLDER LOCK R	1			
	31	BI202560010101	HLDR R	1			
	32	BI202553010101	HLDR L	1			
	33	BI107480010101	HLDR SOUND MODE	1			
	34	BI202592010101	HOLDER BRACKET	1			
	35	BI202555010101	HEAT SINK AMP	1			
	36	BI107485010101	INDICATOR STANDBY	1			
	37	BI109819030201	KNOB VOLUME TAB	1			
	38	BI202548010101	METAL COVER	1			
	39	BI301922010101	MIRROR SHEET	1			
	40	BI202550020201	REAR PANEL	1			
		BI202550030201	REAR PANEL	1			
	41	BI104142010102	PLATE LOCK 1	2			
	49	BI107482010101	RING VOLUME	1			
	50	BIPMW001101S3	SCREW	4	4.0XL6 METAL		
	51	BIBT000418	SCREW	23	2.6XL8 PLASTIC		
	52	BIRT000617B3	SCREW	14	3.0XL10 PLASTIC		
	53	BIBT0006091	SCREW	2	3.0XL14 PLASTIC		
	54	BIRM000603S3	SCREW	19	3.0XL6 METAL		

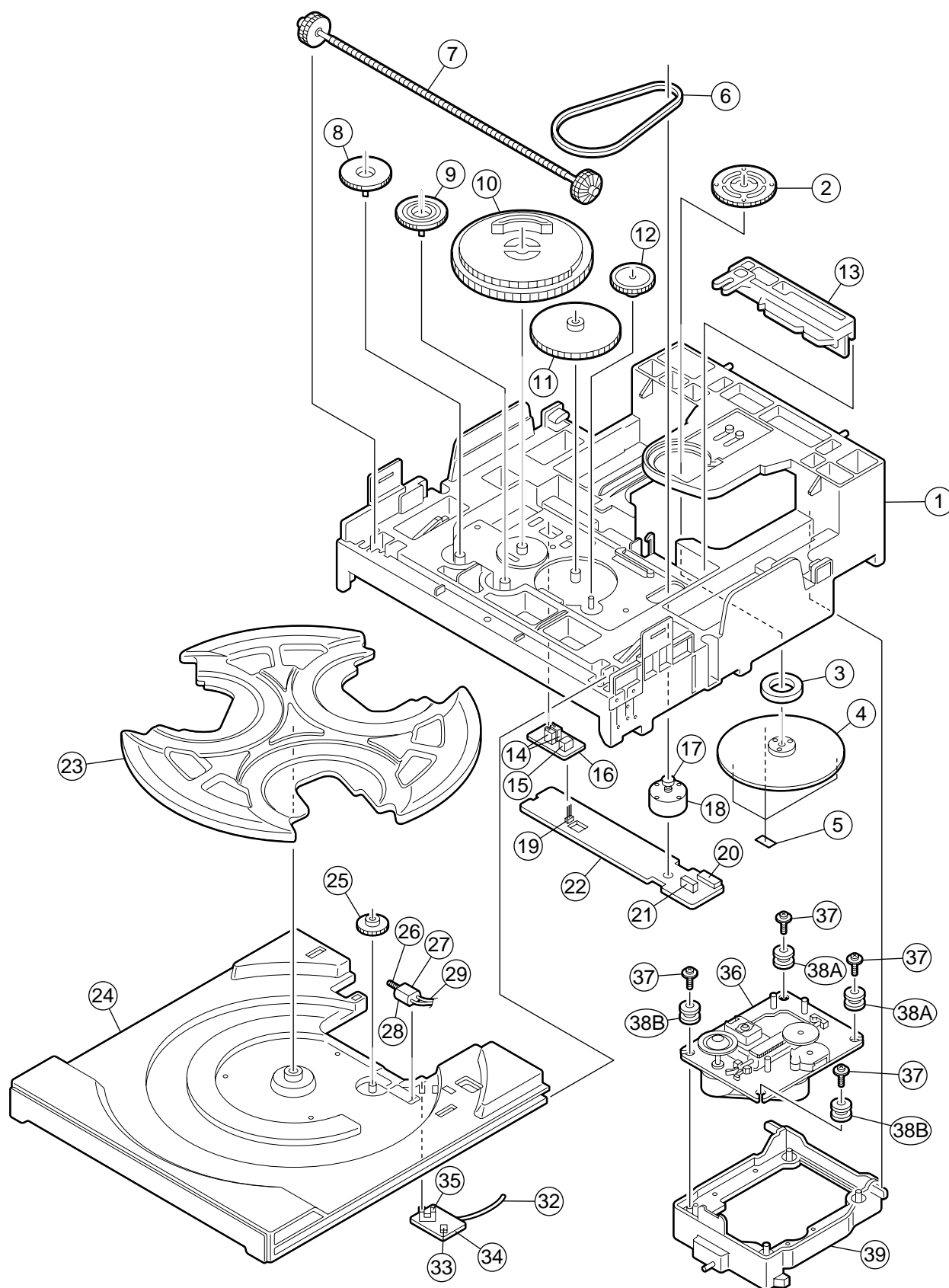
■ Parts list (General assembly)

Block No. M1MM

⚠	Item	Parts number	Parts name	Q'ty	Description	Area
⚠ ⚠ ⚠	55	BIKT000627	SCREW	4	RH/TS 3XL8 RH/TS 3XL8 T951	E,EN,EV B
	56	BI107470010101	SELECT BUTTON L	1		
	57	BI107469010101	SELECT BUTTON R	1		
	58	BI107472010101	SOUND MODE BUTTON	1		
	59	BI107479010101	SOURCE BUTTON B	1		
	60	BI202566010101	SPRING L	1		
	61	BI202565010101	SPRING R	1		
	62	BI107476010101	SUB BUTTON SET	1		
	63	BI107474010101	SUB BUTTON	1		
	64	BIRM000604S3	SCREW	8		
	65	BIRT000611B3	SCREW	18		
	66	BI1401002	POWER CORD	1		
		BI1401091	POWER CORD	1		
	67	BI211011076001W	POWER TRANS	1		

CD changer mechanism assembly and parts list

Block No. M A M M



■ Parts list (CD changer mechanism)

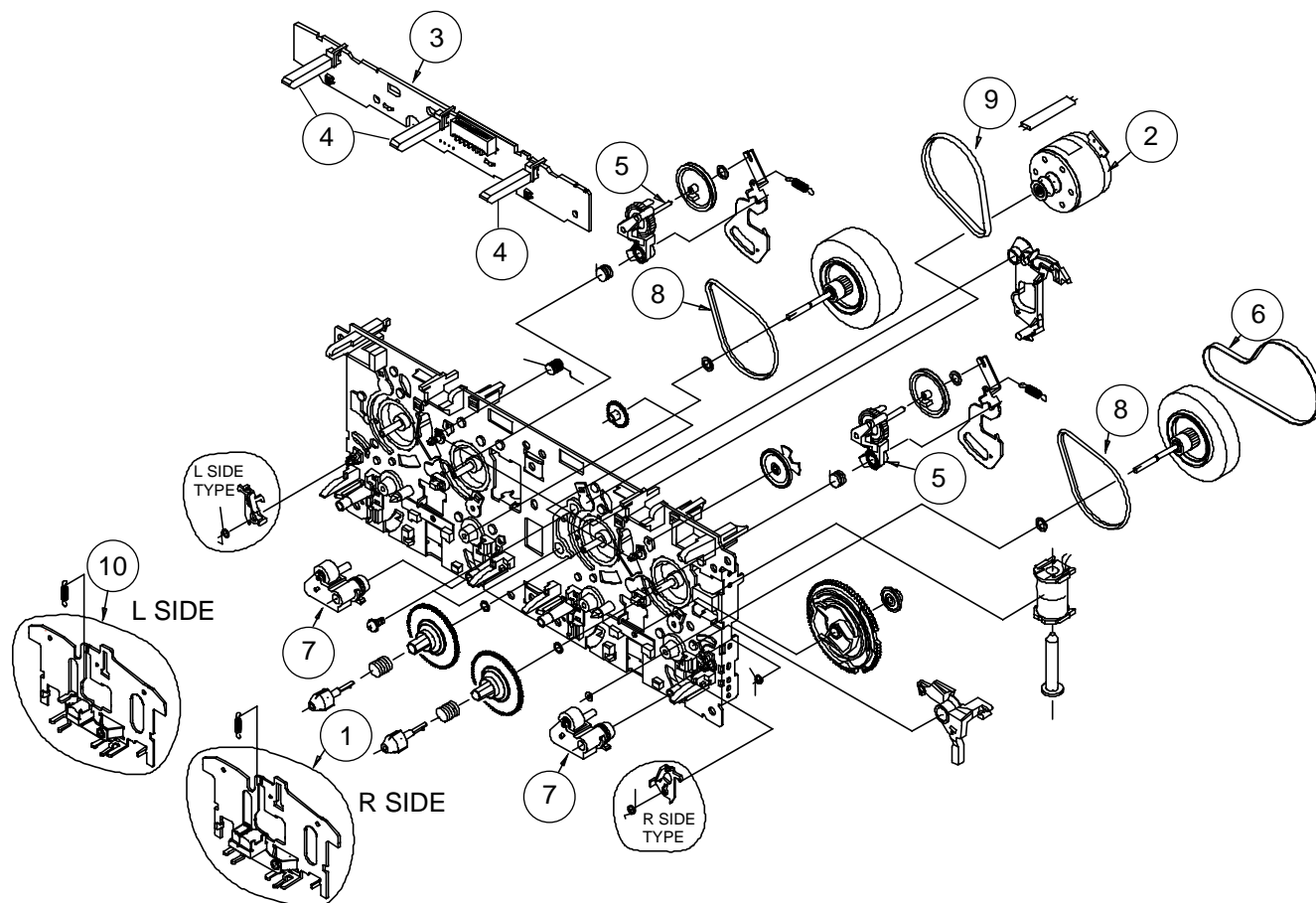
Block No. MAMM

△	Item	Parts number	Parts name	Q'ty	Description	Area
	1	BIAJ7200601J	BASE-MAIN	1	1X1	
	2	BIAJ6100601P	BRKT-CHUCK	1		
	3	BI3302000158	MAGNET-FERRITE	1		
	4	BIAJ7200601L	TABLE-CHUCK	1	1X4	
	5	BIAJ6300601A	SHEET-CHUCK	3		
	6	BIAJ7300601B	BELT-LOAD	1		
	7	BIAJ6600601N	GEAR-SYNCRO	1	1X2	
	8	BIAJ6600601L	GEAR-CONVERT	1	1X4	
	9	BIAJ6600601M	GEAR-TRAY	1	1X4	
	10	BIAJ6600601R	GEAR-CAM	1	1X2	
	11	BIAJ6600601K	GEAR-LOAD	1	1X4	
	12	BIAJ6600601J	GEAR-PULLEY	1	1X4	
	13	BIAJ7200601N	SLIDER-CAM	1	1X4	
	14	BI3405000101	SWITCH-MICRO	2		
	15	BI3711003379	CONNECTOR-HEADER	1		
	16	BIAJ4100601K	PCB-SW	1		
	17	BIAJ6100601K	PULLEY-MOTOR	1	1X4	
	18	BIAJ3100601F	MOTOR-DC	1		
	19	BI3710001248	CONNECTOR-SOCE	1		
	20	BI3711003692	CONNECTOR-HEADER	1		
	21	BI3708001163	CONNECTOR-FPC	1		
	22	BIAJ4100601L	PCB-MECHA	1		
	23	BIAJ7200601P	TRAY-ROULETTE	1	1X2	
	24	BIAJ7200601Q	TRAY-DISC	1	1X2	
	25	BIAJ6600601Q	GEAR-ROULETTE	1	1X4	
	26	BIAJ6600601P	GEAR-WORM	1	1X2	
	27	BIAJ3100601K	MOTOR-LOADING	1		
	28	BIAJ6300601B	SHEET-MOTOR	1		
	29	BIAJ3900601A	WIRE-ROULETTE	1		
	32	BIAJ3900601B	WIRE-TRAY	1		
	33	BI3711000003	CONNECTOR-HEADER	1		
	34	BIAJ4100601J	PCB-SENSOR	1		
	35	BIAJ3200601A	SENSOR-ROULETTE	1		
	36	BIAJ9050605F	CMS-B31NG6U	1		
	37	BIAJ6000601F	SCREW	4		
	38A	BIAJ7300601F	RUBBER-B31Y	2		
	38B	BIAJ7300601D	RUBBER-B31	2		
	39	BIAJ7200602F	LEVER-LIFTER	1	1X2	

Cassette mechanism assembly and parts list

Block No. M P M M


CMAT6Z219A



Note: Parts listed on the Parts List below can be supplied. However, parts that are not listed below cannot be supplied individually but only by purchasing the whole Cassette Mechanism Assembly Unit. (When ordering, use the Parts No. CMAT6Z219A for Cassette Mechanism Assembly Unit.)

■ Parts list (Cassette mechanism)

Block No. MPMM

	Item	Parts number	Parts name	Q'ty	Description	Area
	1	BIF513858	PLATE HD BLK	1		
	2	BIF525346	MTR MAIN BLK	1		
	3	BIF567843	PCB CONTROL BLK	1		
	4	BIUE20P12	LEAF SWITCH	3		
	5	BIF522063	CLUTCH ASSY BLK	2		
	6	BIFF19N31	MAIN BELT	1		
	7	BIF51435	ROLLER PINCH BLK R	2		
	8	BIFF19S31	F/R BELT MO	2		
	9	BIFF19N22	MAIN BELT	1		
	10	BIF513855	PLATE HD BLK	1		

■ Electrical parts list (Main board) Block No. 01

△	Item	Parts number	Parts name	Remarks	Area
	BF601	BI18A843556N000	F-BEAD	F-B 843556	
	CF1	BI2900911	C FILTER	10.7	
	CF2	BI2900951	C FILTER	10.7 MS3G-A	
	CF3	BI29JT10.7MP015	C DISCRIMINATOR	JT10.7MG3-A	
	CN305	BI12S110023U	FFC CONNECTOR	11P V 1.25MM	
	CN306	BI12S90024U	CONNECTOR	9P V 1.25MM	
	CN307	BI12S30039	CONNECTOR	3P 2.0MM	
	CN308	BI12S80024	CONNECTOR	8P 2.0MM	
	CN309	BI12S210004	FFC CONNECTOR	21P V 1.25MM	
	CN601	BI12S160031	FFC CONNECTOR	16P 1.0MM	
	CN602	BI12P60142U	CONN. WIRE	6P 120MM	
	CN603	BI12P100035U	CONN. WIRE	10P 160MM	
	CN604	BI12S160033U	FFC CONNECTOR	16P V 1.25MM	
	D1	1SS133	DIODE	BI31SS133M0007	
	D2	1SS133	DIODE	BI31SS133M0007	
	D3	1SS133	DIODE	BI31SS133M0007	
	D306	MTZJ9.1B	ZENER DIODE	BI3MTZJ9.1BM000	
	D307	MTZJ5.1B	ZENER DIODE	BI3MTZJ5.1BM000	
	D308	1SS133	DIODE	BI31SS133M0007	
	D309	1SS133	DIODE	BI31SS133M0007	
	D310	1SS133	DIODE	BI31SS133M0007	
	D311	1SS133	DIODE	BI31SS133M0007	
	D312	1SS133	DIODE	BI31SS133M0007	
	D313	1SS133	DIODE	BI31SS133M0007	
	D314	1SS133	DIODE	BI31SS133M0007	
	D321	1SS133	DIODE	BI31SS133M0007	
	D322	1SS133	DIODE	BI31SS133M0007	
	D324	1SS133	DIODE	BI31SS133M0007	
	D328	1SS133	DIODE	BI31SS133M0007	
	D329	1SS133	DIODE	BI31SS133M0007	
	D330	1SS133	DIODE	BI31SS133M0007	
	D4	1SS133	DIODE	BI31SS133M0007	
	D401	1SS133	DIODE	BI31SS133M0007	
	D402	1SS133	DIODE	BI31SS133M0007	
	D5	1SS133	DIODE	BI31SS133M0007	
	D50	1SS133	DIODE	BI31SS133M0007	
	D51	1SS133	DIODE	BI31SS133M0007	
	D52	1SS133	DIODE	BI31SS133M0007	
	D53	1SS133	DIODE	BI31SS133M0007	
	D6	1SS133	DIODE	BI31SS133M0007	
	D605	1N4001	DIODE	BI31N40011	
	D7	3KV1590	VARACTOR DIODE	BI33KV15901	
	IC1	LA1833N	IC	BI113261	
	IC101	TDA7440D	IC	BI113231	
	IC102	BA15218F	IC	BI113241	
	IC2	LC72136N	IC	BI113271	
	IC3	BU1924F	IC	BI113131	
	IC401	HA12237	IC	BI115011	
	IC402	M74HC4094B	IC	BI114371	
	IC601	MN6627482WA	IC	BI114621	
	IC611	AN22000A	IC	BI113161	
	IC621	BA5936S	IC	BI113141	
	IC631	NJM7808FA	IC	BI110061	
	JA301	BI2301181	RCA W/R JACK	RCA-213D2	
	JA302	BI23F0191	TERMINAL ANT	HSP-312V05	
	L1	BI26012000KM002	INDUCTOR	1.2UH	
	L12	BI26101000KM002	FIXED INDUCTOR	100UH	
	L2	BI605201	COIL MW ANT	OH07-864936	
	L301	BI605071	BIAS-COIL	864306	
	L304	BI18A843556N000	F-BEAD	F-B 843556	
	L306	BI18A843556N000	F-BEAD	F-B 843556	
	L307	BI18A843556N000	F-BEAD	F-B 843556	
	L4	BI605171	COIL MW OSC	AH07-864937	

△	Item	Parts number	Parts name	Remarks	Area
	L50	BI26221000KM002	FIXED INDUCTOR	220UH	
	L6	BI26150000KM002	INDUCTOR	15UH	
	L601	BI26100000KM002	INDUCTOR	10UH	
	L602	BI26100000KM000	FIXED INDUCTOR	10UH	
	L8	BI26101000KM002	FIXED INDUCTOR	100UH	
	PWB	BI251226G01V	MAIN PWB		
	Q1	KTC3194	TRANSISTOR	BI2KTC3194P0008	
	Q10	KTA1267GR	TRANSISTOR	BI2KTA1267GP000	
	Q101	KTC3199GR	TRANSISTOR	BI2KTC3199GP000	
	Q11	KTC3195	TRANSISTOR	BI2KTC3195YP000	
	Q12	DTA114YS	TRANSISTOR	BI2DTA114YSP002	
	Q201	KTC3199GR	TRANSISTOR	BI2KTC3199GP000	
	Q302	KTC3200GR	TRANSISTOR	BI2KTC3200P0008	
	Q303	KTC3203Y	TRANSISTOR	BI2KTC3203YP000	
	Q304	KTA1267GR	TRANSISTOR	BI2KTA1267GP000	
	Q305	DTC144ES	TRANSISTOR	BI2DTC144ESP002	
	Q308	DTC144ES	TRANSISTOR	BI2DTC144ESP002	
	Q309	KTA1273	TRANSISTOR	BI2KTA1273P0008	
	Q310	KTC3199GR	TRANSISTOR	BI2KTC3199GP000	
	Q311	KTA1273	TRANSISTOR	BI2KTA1273P0008	
	Q312	KTC3199GR	TRANSISTOR	BI2KTC3199GP000	
	Q313	KTA1273	TRANSISTOR	BI2KTA1273P0008	
	Q314	DTC114YS	TRANSISTOR	BI2DTC114YSP002	
	Q316	KTC3199GR	TRANSISTOR	BI2KTC3199GP000	
	Q317	KTC3199GR	TRANSISTOR	BI2KTC3199GP000	
	Q318	DTC114YS	TRANSISTOR	BI2DTC114YSP002	
	Q319	KA1270	TRANSISTOR	BI2KTA1270YP000	
	Q321	DTC114YS	TRANSISTOR	BI2DTC114YSP002	
	Q322	KRA107M	TRANSISTOR	BI2KRA107MP0008	
	Q327	KTA1267GR	TRANSISTOR	BI2KTA1267GP000	
	Q401	KTA1267GR	TRANSISTOR	BI2KTA1267GP000	
	Q402	2SD2144S	TRANSISTOR	BI2SD2144SVP002	
	Q403	KTC3199GR	TRANSISTOR	BI2KTC3199GP000	
	Q404	KTC3199GR	TRANSISTOR	BI2KTC3199GP000	
	Q5	DTC114YS	TRANSISTOR	BI2DTC114YSP002	
	Q502	2SD2144S	TRANSISTOR	BI2SD2144SVP002	
	Q503	KTC3199GR	TRANSISTOR	BI2KTC3199GP000	
	Q504	KTC3199GR	TRANSISTOR	BI2KTC3199GP000	
	Q6	DTC114YS	TRANSISTOR	BI2DTC114YSP002	
	Q601	KTA1267GR	TRANSISTOR	BI2KTA1267GP000	
	Q7	DTA114YS	TRANSISTOR	BI2DTA114YSP002	
	Q8	DTA114YS	TRANSISTOR	BI2DTA114YSP002	
	Q9	KTC3199GR	TRANSISTOR	BI2KTC3199GP000	
	TU1	BIZ2509111	TUNER FM FRONT	TFFJ4E	
	T1	BI2901541	CO. FILTER	AC009 450KHZ	
	XXX	BI11A050M0	BLACK WIRE	50MM	
	XXX	BI202426010101	PLATE ANT	T=0.3MM	
	X1	BI2100942	CRYSTAL	75KHZ	
	X2	BI2101503	CRYSTAL	4.332MHZ	
	X601	BI2102361	CRYSTAL	16.9344MHZ	

■ Electrical parts list (Front board)

Block No. 02

△	Item	Parts number	Parts name	Remarks	Area	△	Item	Parts number	Parts name	Remarks	Area
	CN701	BI12S110021	FFC CONNECTOR	11P H 1.25MM			S1020	BI8EVQ21405P015	TACT SWITCH	ROCK	
	CN706	BI12S160034U	FFC CONNECTOR	16P H 1.25MM			S1021	BI8EVQ21405P015	TACT SWITCH	CLASSIC	
	CN707	BI12S210005	FFC CONNECTOR	21P H 1.25MM			S1022	BI8EVQ21405P015	TACT SWITCH	POPS	
	D1051	1SS133	DIODE	BI31SS133M0007			S1023	BI8EVQ21405P015	TACT SWITCH	A/BASS	
	D1052	1SS133	DIODE	BI31SS133M0007			S2	BI8EVQ21405P015	TACT SWITCH	STANDBY	
	D701	1SS133	DIODE	BI31SS133M0007			S701	BI8EVQ21405P015	TACT SWITCH	REC	
	D702	1SS133	DIODE	BI31SS133M0007			S702	BI8EVQ21405P015	TACT SWITCH	DUBBING	
	D703	1SS133	DIODE	BI31SS133M0007			S703	BI8EVQ21405P015	TACT SWITCH	CD REC	
	D705	1SS133	DIODE	BI31SS133M0007			S704	BI8EVQ21405P015	TACT SWITCH	REPEAT	
	D706	1SS133	DIODE	BI31SS133M0007			S705	BI8EVQ21405P015	TACT SWITCH	PROGRAM	
	FL701	BI2701941	FL DISPLAY	17LM03 41PIN			S706	BI8EVQ21405P015	TACT SWITCH	RANDOM	
	FW105	BI12P40251U	CONN. WIRE	4P L=290MM			X701	BI29ZTA8.00P015	CERAMIC RESONTOR	8MHZ	
	F702A	BI1203941	CABLE	3P			X702	BI2102471	CRYSTAL	32.768KHZ	
	F704	BI12P60143U	CONN. WIRE	6P L=50MM							
	HJ105	BI2301211	MINI JACK	CKX-3.5-25							
	IC701	MN101C35D	IC	BI116021							
	IC702	RPM7140	IC	BI114831							
	LE701	BI28B4531EP0110	RED LED	BL-B4531E							
	L1051	BI26047000KM002	FIXED INDUCTOR	4.7UH							
	L1052	BI26047000KM002	FIXED INDUCTOR	4.7UH							
	L1053	BI18A843556N000	F-BEAD	F-B843556							
	L702	BI26100000KM002	INDUCTOR	10UH							
	L703	BI18A843556N000	F-BEAD	F-B843556							
	L707	BI26100000KM002	INDUCTOR	10UH							
	PWB	BI251205G02V	FRONT PWB								
	P1	BI11AT160B0U	BLACK WIRE	IP L=160MM							
	Q704	KTC3195Y	TRANSISTOR	BI2KTC3195YP000							
	Q705	KTC3195Y	TRANSISTOR	BI2KTC3195YP000							
	Q711	KRA102M	TRANSISTOR	BI2KRA102MP0008							
	Q713	DTC114YS	TRANSISTOR	BI2DTC114YSP002							
	Q716	DTC114TK	TRANSISTOR	BI2DTC114TKA011							
	Q717	DTC114TK	TRANSISTOR	BI2DTC114TKA011							
	Q718	DTC114TK	TRANSISTOR	BI2DTC114TKA011							
	Q719	DTC114TK	TRANSISTOR	BI2DTC114TKA011							
	Q720	DTC114TK	TRANSISTOR	BI2DTC114TKA011							
	Q721	DTC114TK	TRANSISTOR	BI2DTC114TKA011							
	Q722	DTC114TK	TRANSISTOR	BI2DTC114TKA011							
	Q723	DTC114TK	TRANSISTOR	BI2DTC114TKA011							
	Q724	DTC114TK	TRANSISTOR	BI2DTC114TKA011							
	Q725	DTC114TK	TRANSISTOR	BI2DTC114TKA011							
	Q726	DTC114TK	TRANSISTOR	BI2DTC114TKA011							
	Q727	DTC114TK	TRANSISTOR	BI2DTC114TKA011							
	Q728	DTC114TK	TRANSISTOR	BI2DTC114TKA011							
	SW701	BI804221	JOG SWITCH	PVB20FHIN							
	S1	BI8EVQ21405P015	TACT SWITCH	S/TURBO							
	S1002	BI8EVQ21405P015	TACT SWITCH	TAPE							
	S1003	BI8EVQ21405P015	TACT SWITCH	AUX							
	S1004	BI8EVQ21405P015	TACT SWITCH	FM/AM							
	S1005	BI8EVQ21405P015	TACT SWITCH	CANCEL							
	S1006	BI8EVQ21405P015	TACT SWITCH	SET							
	S1007	BI8EVQ21405P015	TACT SWITCH	CD							
	S1008	BI8EVQ21405P015	TACT SWITCH	CD1							
	S1009	BI8EVQ21405P015	TACT SWITCH	CD2							
	S1010	BI8EVQ21405P015	TACT SWITCH	CD3							
	S1011	BI8EVQ21405P015	TACT SWITCH	OPEN							
	S1012	BI8EVQ21405P015	TACT SWITCH	DISC/SKIP							
	S1013	BI8EVQ21405P015	TACT SWITCH	TAPE A/B							
	S1014	BI8EVQ21405P015	TACT SWITCH	CLOCK/TIME							
	S1015	BI8EVQ21405P015	TACT SWITCH	STOP							
	S1016	BI8EVQ21405P015	TACT SWITCH	TUN-							
	S1017	BI8EVQ21405P015	TACT SWITCH	TUN+							
	S1018	BI8EVQ21405P015	TACT SWITCH	PRESET-							
	S1019	BI8EVQ21405P015	TACT SWITCH	PRESET+							

■ Electrical parts list (Amp. board) Block No. 03

⚠	Item	Parts number	Parts name	Remarks	Area
	CN307	BI12S90024U	CONNECTOR	9P P=1.25MM	
	CN701	BI12S120043	CONNECTOR	12P	
	CN951	BI12S90025U	CONNECTOR	9P P=2.5MM	
⚠	C905	BICE33865M2	E CAPACITOR	3300UF 65V	
⚠	C906	BICE33865M2	E CAPACITOR	3300UF 65V	
	D304	1SS133	DIODE	BI31SS133M0007	
	D305	1SS133	DIODE	BI31SS133M0007	
	D325	1SS133	DIODE	BI31SS133M0007	
	D326	1SS133	DIODE	BI31SS133M0007	
	D327	1SS133	DIODE	BI31SS133M0007	
	D331	1SS133	DIODE	BI31SS133M0007	
	D333	1SS133	DIODE	BI31SS133M0007	
	D334	MTZJ15C	ZENER DIODE	BI3MTZJ15CM0007	
	D335	MTZJ15C	ZENER DIODE	BI3MTZJ15CM0007	
	D336	1SS133	DIODE	BI31SS133M0007	
	D901	G5SBA60L	DIODE	BI3G5SBA601	
	D902	FR202	RECTIFIER DIODE	BI3FR202L2F	
	D903	FR202	RECTIFIER DIODE	BI3FR202L2F	
	D904	FR202	RECTIFIER DIODE	BI3FR202L2F	
	D905	FR202	RECTIFIER DIODE	BI3FR202L2F	
	D906	1N4001	DIODE	BI31N40011	
	D907	UZ36BSA	ZENER DIODE	BI3UZ36BSAM0000	
	D908	MTZJ6.2B	ZENER DIODE	BI3MTZJ6.2BM000	
	D911	MTZJ5.6B	ZENER DIODE	BI3MTZJ5.6BM000	
	D912	MTZJ13B	ZENER DIODE	BI3MTZJ13BM000	
	D913	MTZJ12C	ZENER DIODE	BI3MTZJ12CM0007	
	D914	RS402M	RECTIFIER	BI3RS402M1	
	D916	1SS133	DIODE	BI31SS133M0007	
	IC301	STK412-010	IC	BI115001	
	L101	BI2601141	COIL	3.0UH	
	L201	BI2601141	COIL	3.0UH	
	PWB	BI251227G01V	AMP PWB		
	Q103	KTC3199GR	TRANSISTOR	BI2KTC3199GP000	
	Q104	KTA1267GR	TRANSISTOR	BI2KTA1267GP000	
	Q105	KTC3199GR	TRANSISTOR	BI2KTC3199GP000	
	Q203	KTC3199GR	TRANSISTOR	BI2KTC3199GP000	
	Q204	KTA1267GR	TRANSISTOR	BI2KTA1267GP000	
	Q205	KTC3199GR	TRANSISTOR	BI2KTC3199GP000	
	Q307	KTC3199GR	TRANSISTOR	BI2KTC3199GP000	
	Q334	KRA107M	TRANSISTOR	BI2KRA107MP0008	
	Q335	KRA107M	TRANSISTOR	BI2KRA107MP0008	
	Q336	KTC3199GR	TRANSISTOR	BI2KTC3199GP000	
	Q337	KTC3199GR	TRANSISTOR	BI2KTC3199GP000	
	Q338	KTC3199GR	TRANSISTOR	BI2KTC3199GP000	
	Q339	DTC114YS	TRANSISTOR	BI2DTC114YSP002	
	Q901	8550C	TRANSISTOR	BI28550CP0005	
	Q904	KTB1366	TRANSISTOR	BI2KTB1366Y8	
	Q905	KTC3199GR	TRANSISTOR	BI2KTC3199GP000	
	Q906	KTC3199GR	TRANSISTOR	BI2KTC3199GP000	
	Q907	KTB1366	TRANSISTOR	BI2KTB1366Y8	
	Q909	KRA107M	TRANSISTOR	BI2KRA107MP0008	
	Q911	KTC3199GR	TRANSISTOR	BI2KTC3199GP000	
	Q912	DTC114ES	TRANSISTOR	BI2DTC114ESP002	
	RY301	BI8RL00071	RELAY	G5PA-2	

■ Electrical parts list (Transformer board) Block No. 04

⚠	Item	Parts number	Parts name	Remarks	Area
	CN981	BI12P40248U	CONN ASSY	4P ASSY	
	D981	1N4001	DIODE	BI31N40011	
	D982	1N4001	DIODE	BI31N40011	
	D983	1N4001	DIODE	BI31N40011	
	D984	1N4001	DIODE	BI31N40011	
	D985	1SS133	DIODE	BI31SS133M0007	
	D987	1SS133	DIODE	BI31SS133M0007	
	FW951	BI12P90055U	CONNATOR ASSY	9P ASSY	
⚠	F952A	BI201196010101	FUSE HOLD	CX-NV300	
⚠	F952B	BI201196010101	FUSE HOLD	CX-NV300	
⚠	F981A	BI201196010101	FUSE HOLD	CX-NV300	
⚠	F981B	BI201196010101	FUSE HOLD	CX-NV300	
⚠	IC981	NJM78L06A	IC	BI110041	
	PWB	BI251223G01V	TRANS PWB		
	Q981	2DTC114TS	TRANSISTOR	BI2DTC114TSP002	
	Q982	2DTC114YS	TRANSISTOR	BI2DTC114YSP002	
	Q983	2DTC114YS	TRANSISTOR	BI2DTC114YSP002	
⚠	RL981	BI8RL00131	RELAY	DC 12V	
⚠	TB901	BI201323010101	TERMINAL	1P	
⚠	TB902	BI201323010101	TERMINAL	1P	

■ Electrical parts list (Wiring diagram) Block No. 05

⚠	Item	Parts number	Parts name	Remarks	Area
	CN305	BI1205441U	FF-CABLE	11P	
	CN306	BI1205261U	FF-CABLE	9P	
	CN309	BI1205241U	FF-CABLE	21P	
	CN601	BI1205291U	FF-CABLE	16P	
	CN604	BI1205251U	FF-CABLE	16P	
	CN701	BI1205281U	FF-CABLE	11P	
	CORD	BI18A00181	F-BEAD		
	DECK	BI11AT065B0U	WIRE	1P 73MM	
	DECKA	BI12P30215U	WIRE	3P 360MM	
	DECKB	BI12P80102U	WIRE	8P 485MM	

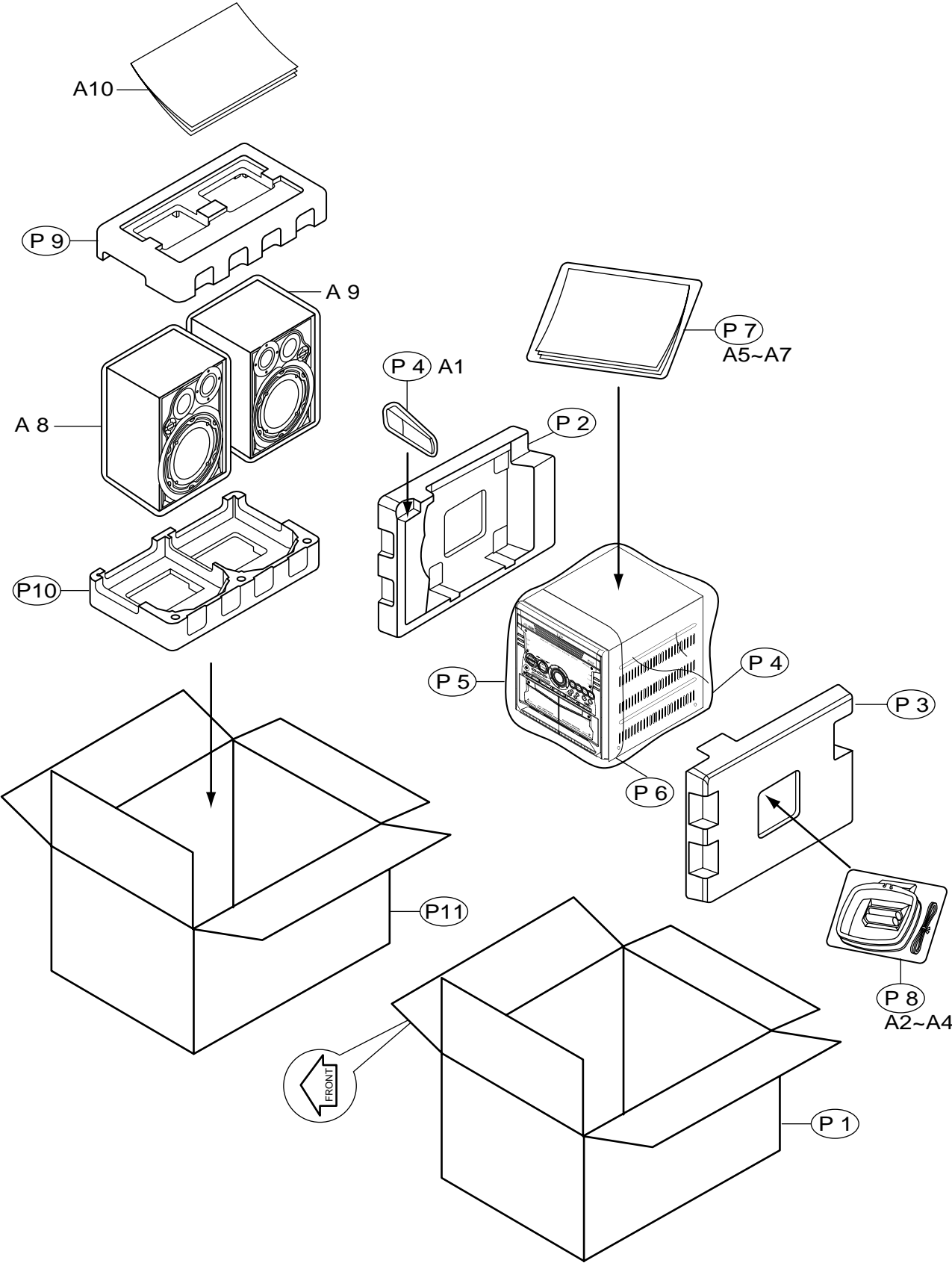
< M E M O >

Packing materials and accessories parts list

B,E,EN Version

Block No. M 3 M M

Block No. M 5 M M



■ Parts list (Packing B,E,EN Vesion)

Block No. M3MM

⚠	Item	Parts number	Parts name	Q'ty	Description	Area
	P 1	BI4313112	CARTON BOX	1	SET	B,E,EN
	P 2	BI4512311	POLY FORM	1	LEFT	B,E,EN
	P 3	BI4512321	POLY FORM	1	RIGHT	B,E,EN
	P 4	BI4005355	POLY BAG	2	REMOTE&POWER CORD	
	P 5	BI4710321	POLY BAG	1	SET	
	P 6	BI4511451	EPE FOAM PAPER	1	SET	
	P 7	BI4710311	POLY BAG	1	INSTRUCTIONS	
	P 8	BI4710511	POLY BAG	1	ANT LOOP	
	P 9	BI4512351	POLY FORM	1	TOP	
	P10	BI4512361	POLY FORM	1	BOTTOM	
	P11	BI4313181	CARTON BOX	1	SPEAKER BOX	B,E,EN

■ Parts list (Accessories B,E,EN Vesion)

Block No. M5MM

⚠	Item	Parts number	Parts name	Q'ty	Description	Area
	A 1	BI600MXKA6020	REMOTE CONTROL	1		
	A 2	-----	BATTERY	2		
	A 3	BIAN01031	AM LOOP ANT	1		
	A 4	BIAN01022	ANT WIRE	1		
	A 5	BI4411871	INSTRUCTIONS	1	LVT1014-004A	E
		BI4412161U	INSTRUCTIONS	1	LVT1014-003A	B
		BI4412171U	INSTRUCTIONS	1	LVT1014-005A	EN
	A 6	BI4032883	GUARANTEE CERTIFICATE	1	BT-54008-4 0602	B,E,EN
	A 7	BI4032912	USER CARD	1	VNA3000-204	B
	A 8	MXKA6E-SPBOX-L	SPEAKER BOX L	1		B,E,EN
	A 9	MXKA6E-SPBOX-R	SPEAKER BOX R	1		B,E,EN
	A10	LVT1058-001A	INSTRUCTIONS	1	SPEAKER BOX	B,E,EN

Packing materials and accessories parts list

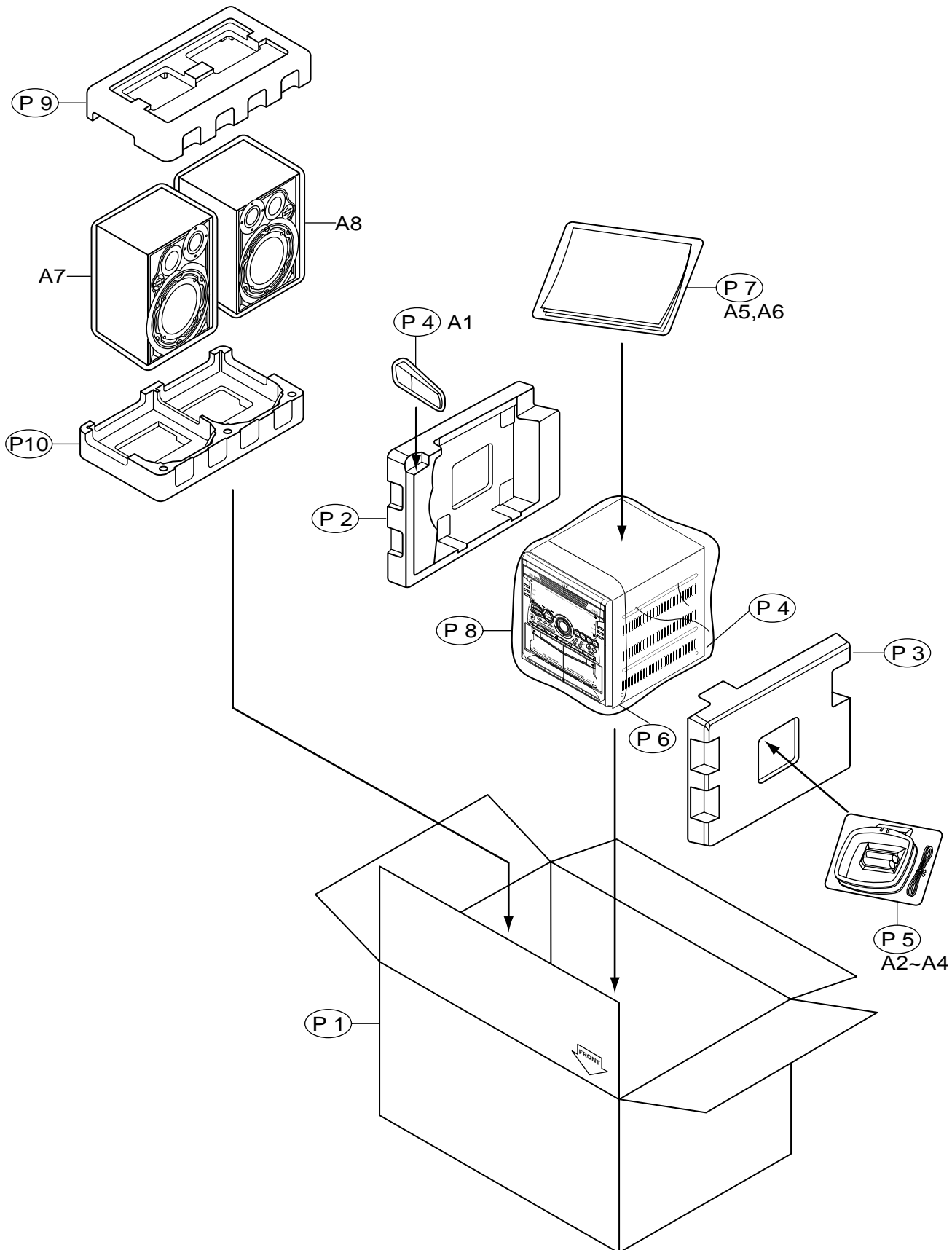
EV Version

Block No.

M	3	M	M
---	---	---	---

Block No.

M	5	M	M
---	---	---	---



■ Parts list (Packing EV Vesion)

Block No. M3MM

⚠	Item	Parts number	Parts name	Q'ty	Description	Area
	P 1	BI4313021	CARTON BOX	1		EV
	P 2	BI4512251	POLY FORM	1	LEFT	EV
	P 3	BI4512261	POLY FORM	1	RIGHT	EV
	P 4	BI4005355	POLY BAG	2	REMOTE&POWER CORD	
	P 5	BI4710511	POLY BAG	1	ANT LOOP	
	P 6	BI4511451	EPE FOAM PAPER	1	SET	
	P 7	BI4710311	POLY BAG	1	INSTRUCTIONS	
	P 8	BI4710321	POLY BAG	1	SET	
	P 9	BI4512351	POLY FORM	1	TOP	
	P10	BI4512361	POLY FORM	1	BOTTOM	

■ Parts list (Accessories EV Vesion)

Block No. M5MM

⚠	Item	Parts number	Parts name	Q'ty	Description	Area
	A 1	BI600MXKA6020	REMOTE CONTROL	1		
	A 2	-----	BATTERY	2		
	A 3	BIAN01031	AM LOOP ANT	1		
	A 4	BIAN01022	ANT WIRE	1		
	A 5	BI4032932	GUARANTEE CERTIFICATE	1	BT-54012-3 0802	EV
	A 6	BI4412221U	INSTRUCTIONS	1	LVT1014-006A	EV
	A 7	MXKA6EV-SPBOX-L	SPEAKER BOX L	1		EV
	A 8	MXKA6EV-SPBOX-R	SPEAKER BOX R	1		EV