

zeusPatch20070529 Installation Guide

June 4th, 2007

Toshiba International Customer Service & Support – Planning

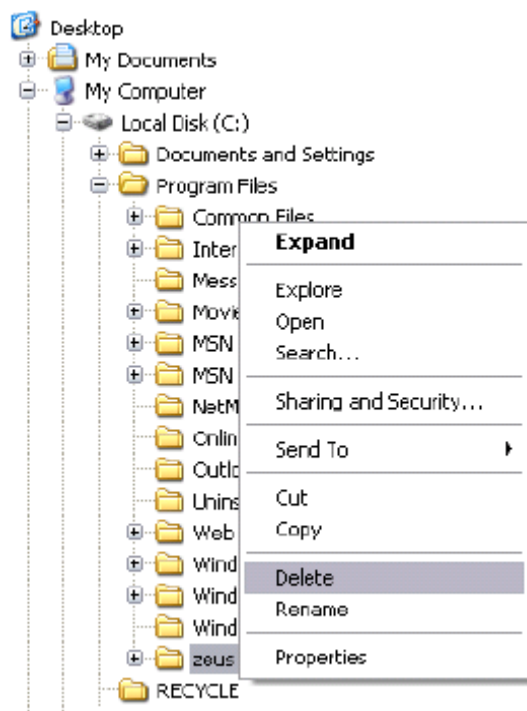
This is a patch file to improve the ZEUS Engine Version 2 that has been provided and installed in your PC.

Perform the followings to update your ZEUS Engine Version2 for its performance.

1. Delete the ZEUS Engine Version 2 from your PC.

You can directly delete it from the c:\Program Files\zeus.

Deletion never causes any problem.



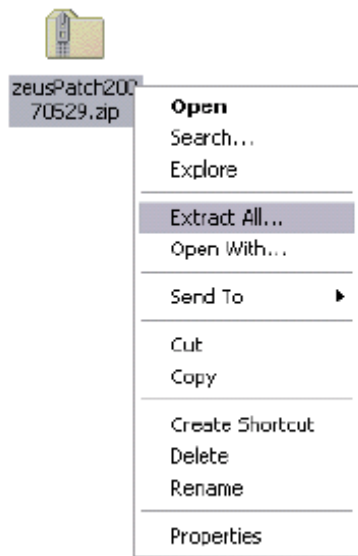
2. Detach zeusPatch20070529.zip file into the appropriate folder in your PC.

3. Unzip it completely.

If you are Windows XP user and using the zip compressed file extraction with OS, refer to the following for the completed unzipping.

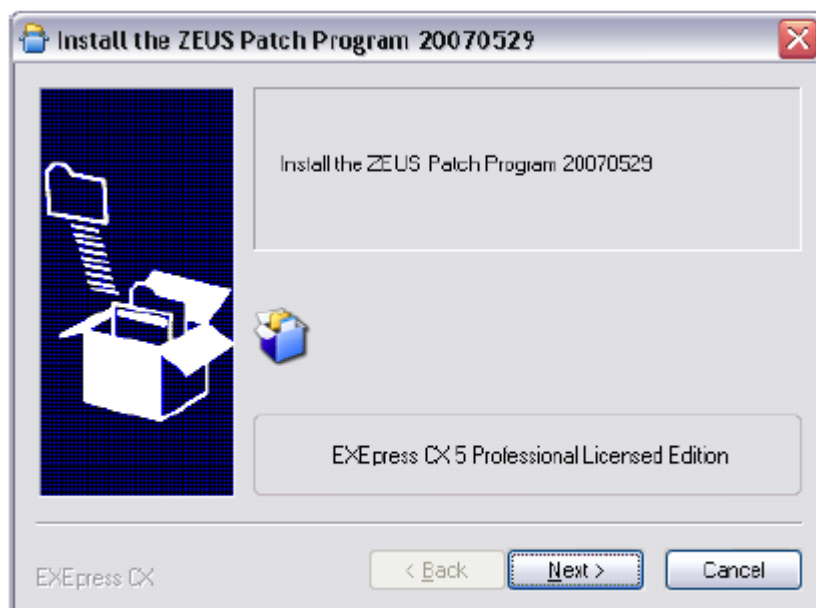
Click zeusPatch20070529.zip with right button on the mouse.

If you are using other unzipping program, follow its instruction.



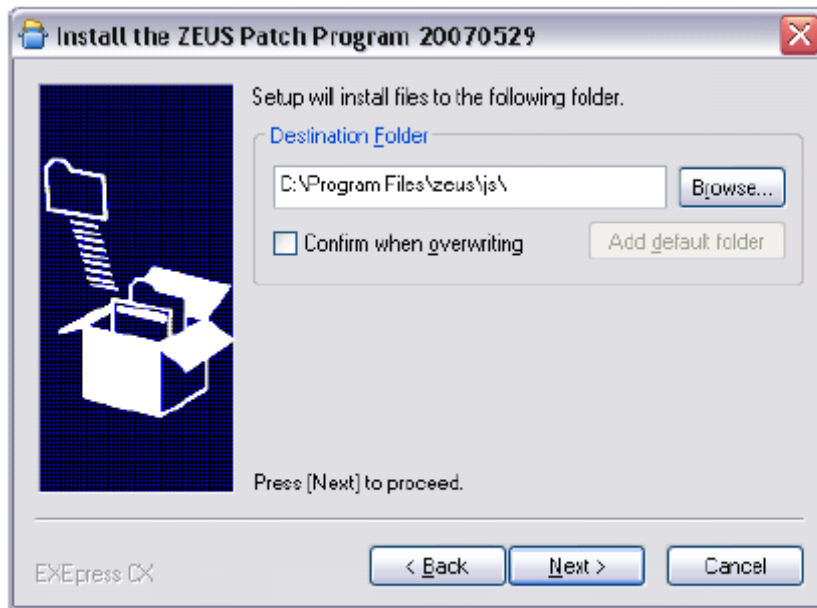
4. Installation of ZEUS Patch program 20070529.

Open the unzipped zeusPatch20070529 folder and double-click zesuPatch20070529.exe. The following installation window will be opened.

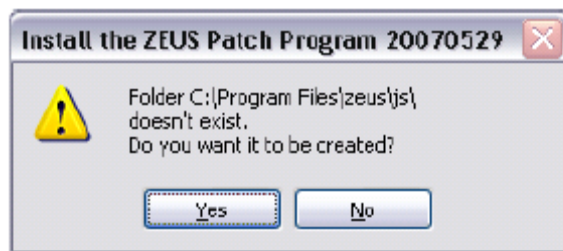


Click [Next] button to continue.

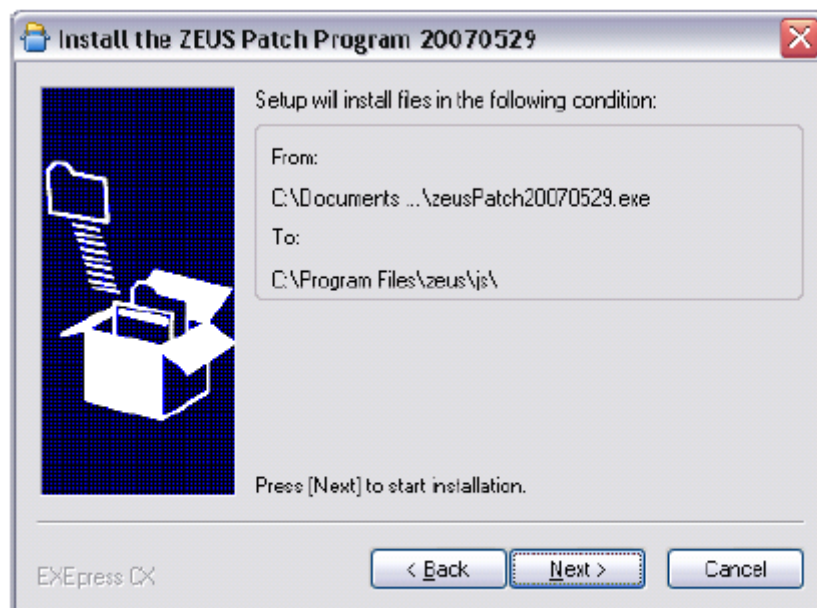
Do not alter or change the destination Folder otherwise Zeus engine may malfunction.



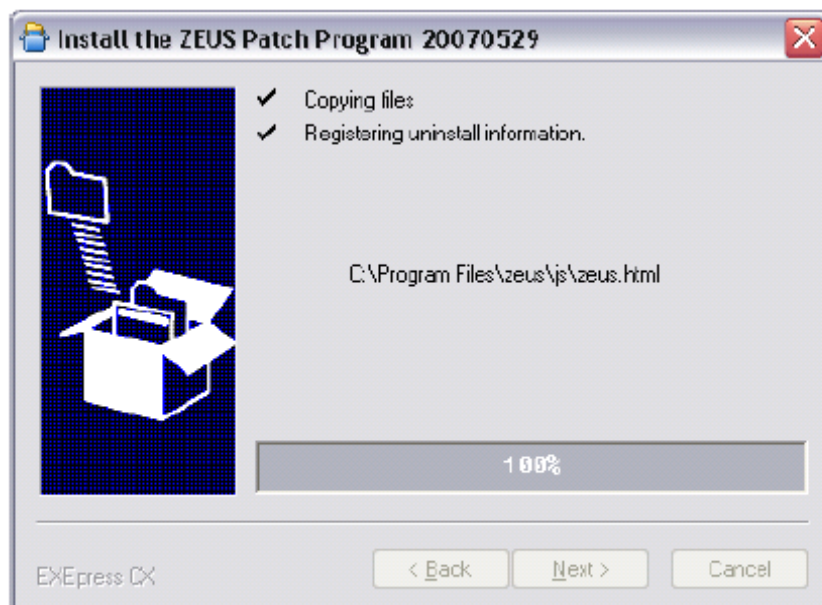
Click [Yes] to continue.



Click [Yes] to continue.



The installation is in progress



Click [Finish] to complete the installation.

